

PE Anti-Human HLA-A,B,C Monoclonal Antibody



天津三箭生物技术股份有限公司
Tianjin Sungene Biotech Co., Ltd.
精准 高效 稳定 Precision Efficient Stable

| Catalog Number | Vial Size |
|----------------|-----------|
| H100H2-09G | 25 tests |
| H100H2-09H | 100 tests |

Market | 400-621-0003
marketing@sungenebiotech.com

Support | 022-66211636-8024
techsupport@sungenebiotech.com

Web | www.sungenebiotech.com

Important Note: Centrifuge before opening to ensure complete recovery of vial contents.
This product is guaranteed up to one year from purchase.

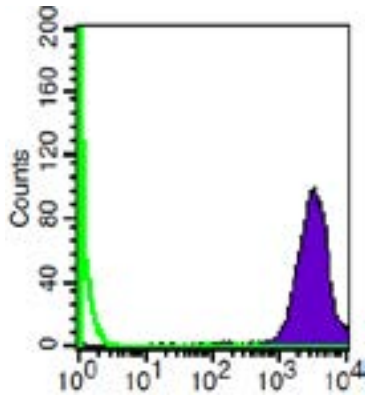
Purified Antibody Characterization

| Clone | Isotype | Reactivity |
|-------|-------------|------------|
| W6/32 | Mouse IgG2a | Human |

Description

MHC class I antigens associated with β 2-microglobulin are expressed by all human nucleated cells. MHC class I molecules are involved in presentation of antigens to CD8⁺ T cells. They play an important role in cell-mediated immune responses and tumor surveillance.

Illustration of Immunofluorescent Staining



Log Fluorescence Intensity

Human peripheral blood lymphocytes stained with PE anti-human HLA-A,B,C

Product Information

Conjugation: PE

Formulation: PBS pH 7.2, 0.09% NaN₃, 0.2% BSA

Storage: Keep as concentrated solution. Store at 4°C and protected from prolonged exposure to light. **Do not freeze.**

Application: Recommended Application: FC

Usage: Each lot of this antibody is quality control tested by immunofluorescent staining with flow cytometric analysis (The amount of the reagent is suggested to be used from 20 μ L to 5 μ L per 100 μ L of peripheral blood. Please check your vial). Since applications vary, the appropriate dilutions must be determined for individual use.

References

- [1] Darrow TL, et al. 1989. J. Immunol. 142:3329.
- [2] Stern P, et al. 1987. J. Immunol. 138:1088.
- [3] Tran TM, et al. 2001. Immunogenetics 53:440.
- [4] Barbatis C, et al. 1981. Gut 22:985.
- [5] Ayyoub M, et al. 2004. Cancer Immunity 4:7.
- [6] Yoshino N, et al. 2000. Exp. Anim. (Tokyo) 49:97.
- [7] Vambutas A, et al. 2000. Clin. Diagn. Lab. Immun. 7:79

For Research Use Only.